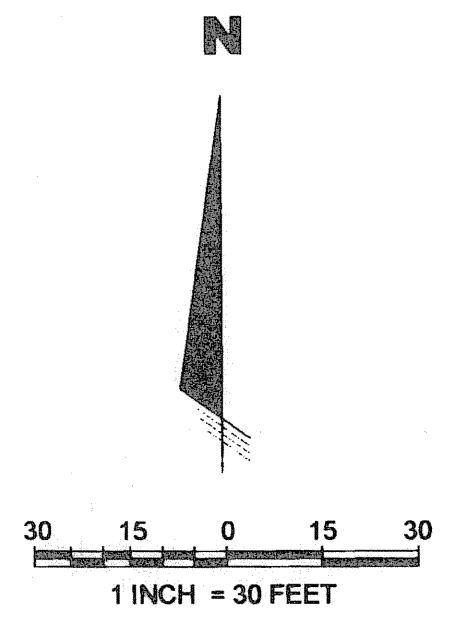


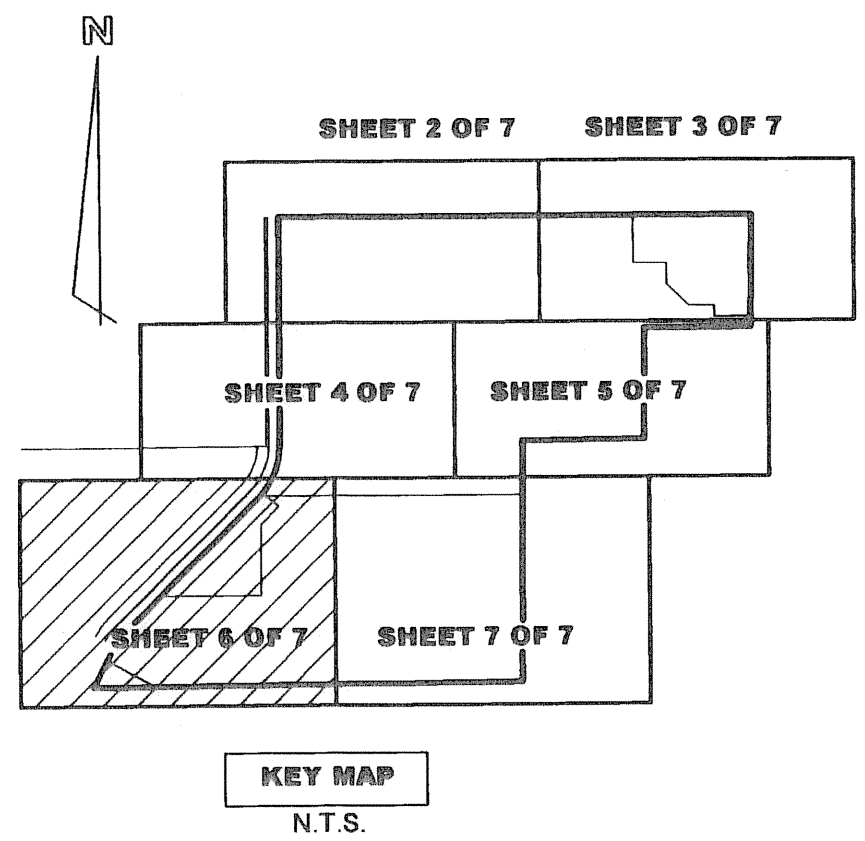
VILLAGE AT DELRAY

A REPLAT OF TRACTS A, C, D, F AND G
AUBURN TRACE, (PLAT BOOK 64 AT PAGE 184 THROUGH PAGE 186)
BEING IN SECTION 20, TOWNSHIP 46 SOUTH, RANGE 43 EAST,
CITY OF DELRAY BEACH, PALM BEACH COUNTY, FLORIDA

JULY 2008

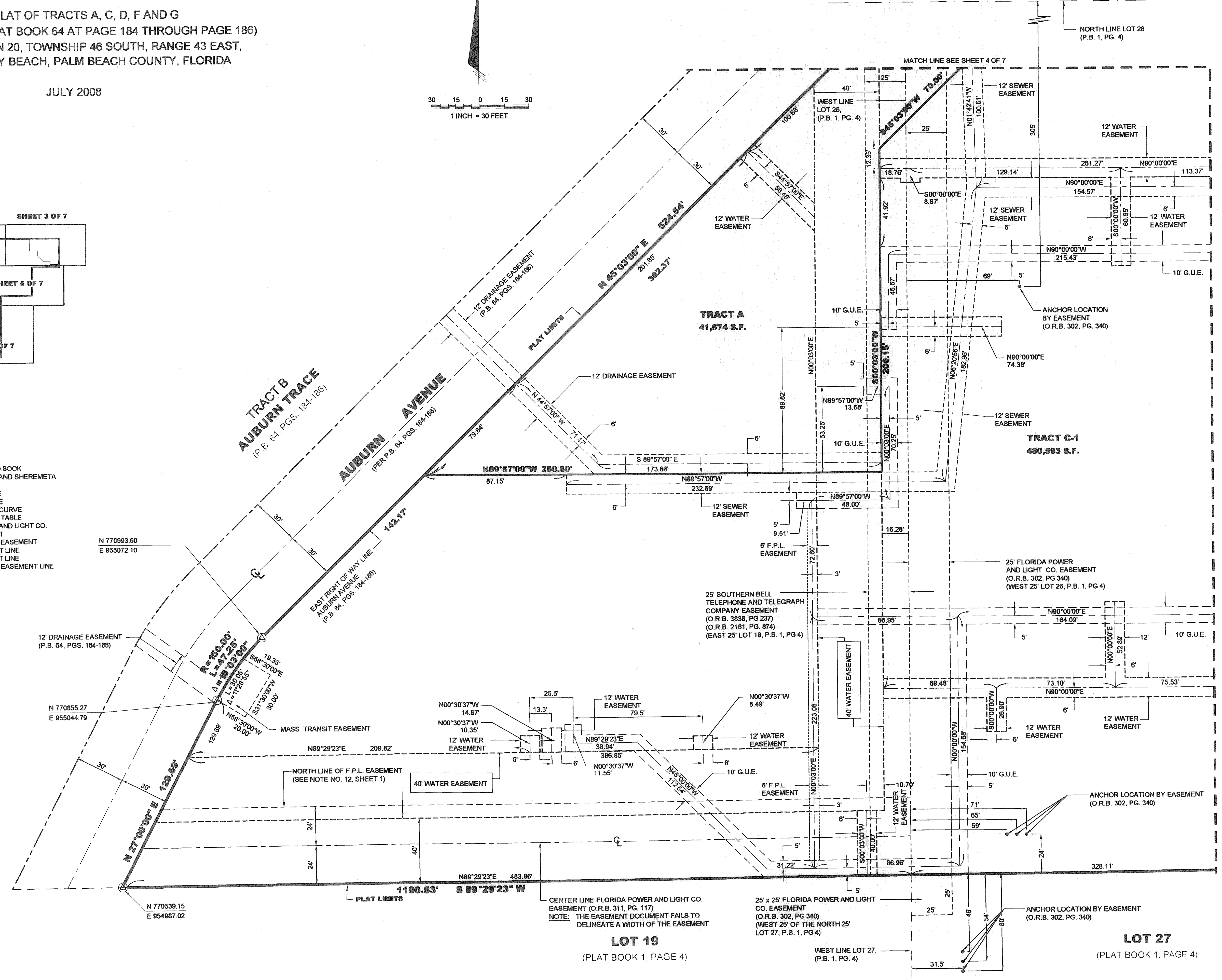


SHEET 6 OF 7

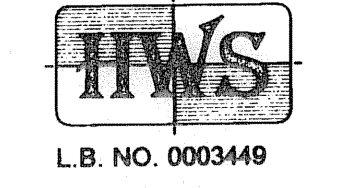


LEGEND:

- P.B. PLAT BOOK
- PG. PAGE
- O.R.B. OFFICIAL RECORD BOOK
- HWS. HELLER-WEAVER AND SHEREMETA
- S.F. SQUARE FEET
- R. RADIUS OF CURVE
- L. LENGTH OF CURVE
- Δ. DELTA ANGLE OF CURVE
- C1. REFER TO CURVE TABLE
- F.P.L. FLORIDA POWER AND LIGHT CO.
- U.E. UTILITY EASEMENT
- G.U.E. GENERAL UTILITY EASEMENT
- SEWER EASEMENT LINE
- WATER EASEMENT LINE
- GENERAL UTILITY EASEMENT LINE



MATCH LINE SEE SHEET 7 OF 7



Heller - Weaver and Sheremeta, inc.
Engineers ... Surveyors and Mappers
310 S.E. 1st Street, Suite 4
Delray Beach, Florida 33483
Phone: (561) 243-8700
Fax: (561) 243-8777

CENTER LINE FLORIDA POWER AND LIGHT CO. EASEMENT (O.R.B. 311, PG. 117)
NOTE: THE EASEMENT DOCUMENT FAILS TO DELINEATE A WIDTH OF THE EASEMENT

LOT 19
(PLAT BOOK 1, PAGE 4)

LOT 27
(PLAT BOOK 1, PAGE 4)

25' x 25' FLORIDA POWER AND LIGHT CO. EASEMENT (O.R.B. 302, PG. 340) (WEST 25' OF THE NORTH 25' LOT 27, P.B. 1, PG. 4)